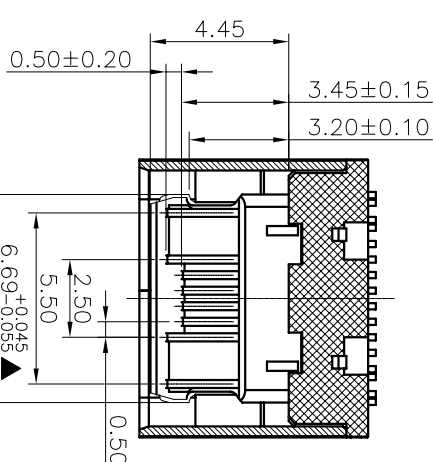
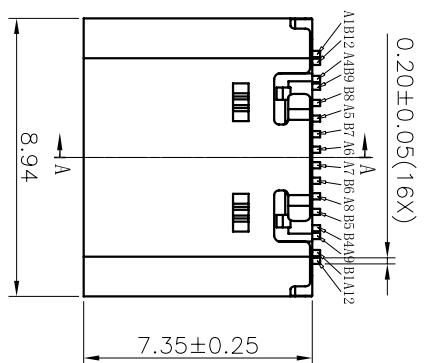
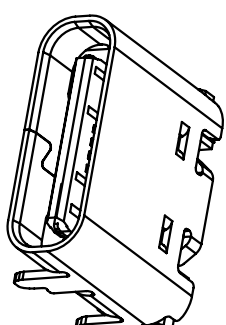
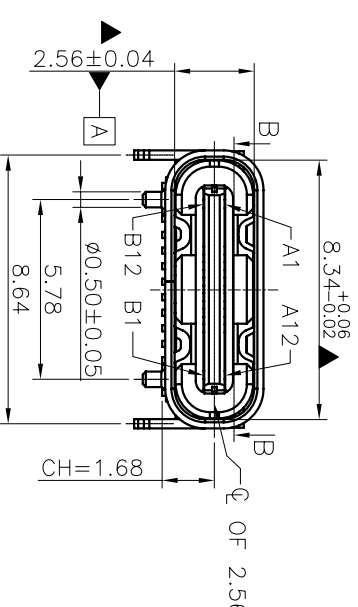
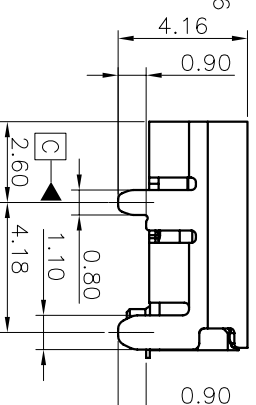
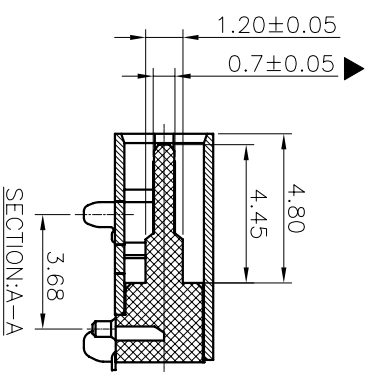


| REV | ECN No. | DATE       | REMARK      |
|-----|---------|------------|-------------|
| A   | NEW     | 2019.10.21 | NEW RELEASE |
| B   | ---     | 2022.10.18 | ---         |



- NOTE:
- ELECTRICAL PERFORMANCE:
    - CURRENT RATING: 5 AMPS. FOR TOTAL VBUS/GND PINS.
      - 1.25AMPS FOR CC PIN.
      - 0.25 AMPS. FOR ALL OTHER CONTACT.
    - VOLTAGE RATING: 20V DC/AC (RMS, MAX)
    - LCRR:--
  - VBUS & GND PINS AND OTHER PINS: 40MD/PIN MAX. SHIELD-50MD/MAX.
  - LCRR MAX: CHANGE OF ALL PINS: 10MD.
  - INSULATION RESISTANCE: 100MD MIN
  - SDIELECTRIC WITHSTAND VOLTAGE: AC 100V FOR 1 MINUTE.
  - MECHANICAL PERFORMANCE:
    - INSERTION FORCE: 5~20N.
    - EXTRACTION FORCE: 8~20N.
    - DURABILITY: 10000 CYCLES.
  - ENVIRONMENTAL PERFORMANCE:
    - OPERATING TEMPERATURE: -25°C~+85°C.
    - REFLOW:--
  - THE PEAK TEMPERATURE ON THE BOARD SHALL BE MAINTAINED FOR 10 SECONDS AT 260°C.
  - COMPLIANCE WITH ROHS REQUIREMENTS.
  - SALT SPRAY: 24H
  - Withr ▲ \* for the key control size

8. PART NUMBER CODE:  
TC044 16S B 12 R-02



PIN DEFINITION:

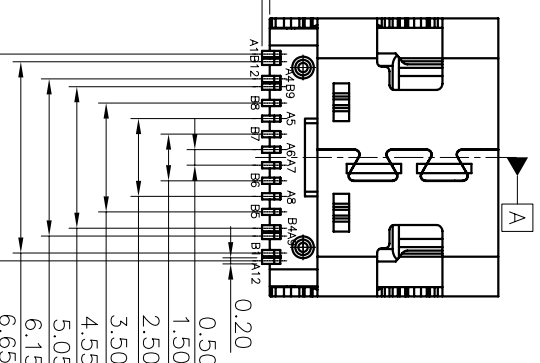
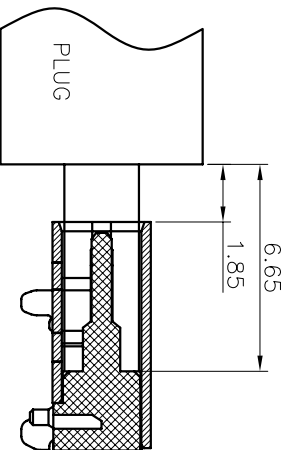
| PIN No.     | A1  | A4   | A5  | A6 | A7 | A8   | A9   | A12 |
|-------------|-----|------|-----|----|----|------|------|-----|
| SIGNAL NAME | GND | VBUS | CC1 | D+ | D- | SBU1 | VBUS | GND |


| PIN No.     | B12 | B9   | B8   | B7 | B6 | B5  | B4   | B1  |
|-------------|-----|------|------|----|----|-----|------|-----|
| SIGNAL NAME | GND | VBUS | SBU2 | D- | D+ | CC2 | VBUS | GND |

TYPE:

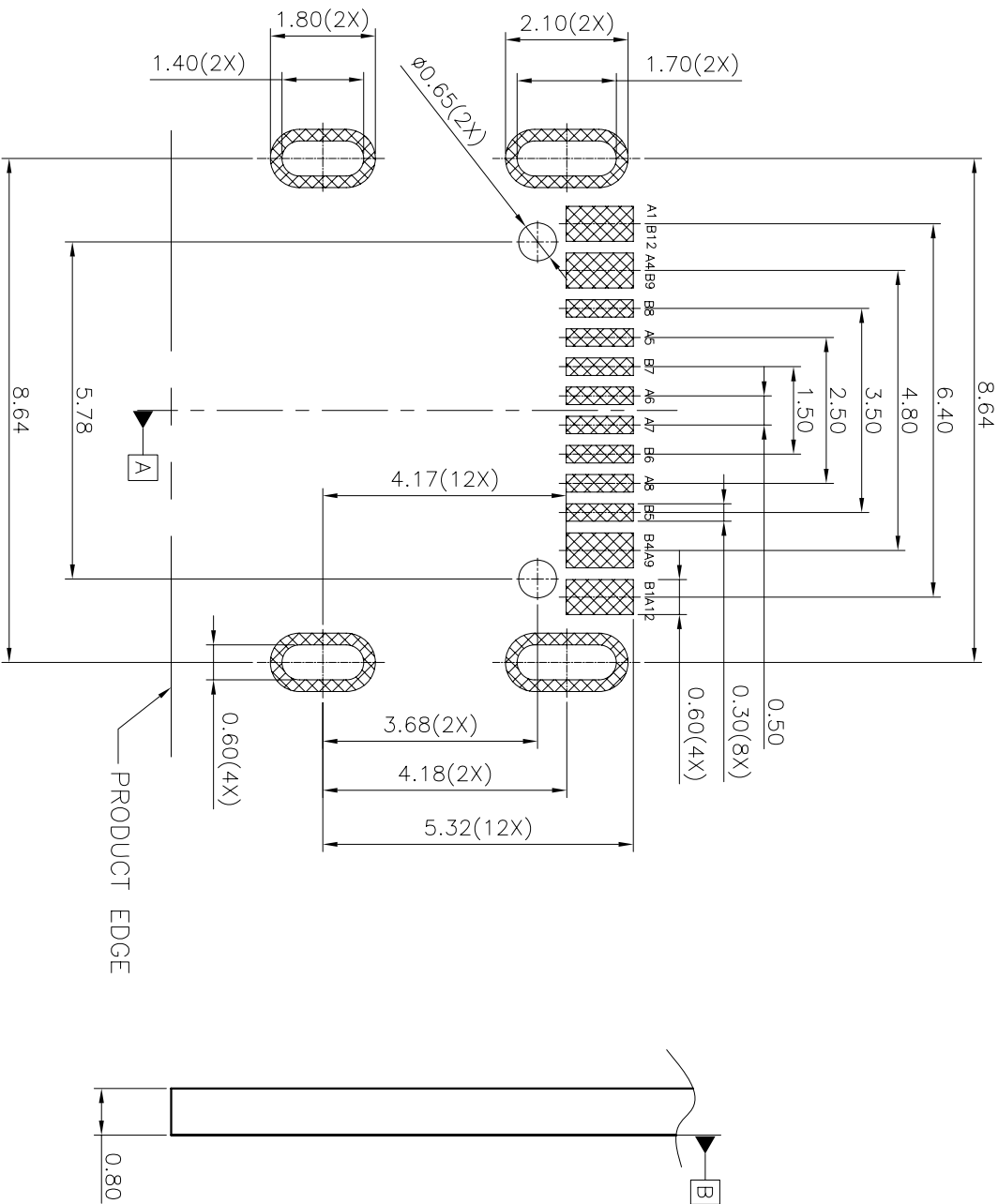
|     |                 |                      |  |      |
|-----|-----------------|----------------------|--|------|
| 4   | SHELL           | SUS304 1/2H T=0.30mm | NICKEL 30u" MIN PLATING  | 1PCS |
| 3   | SHIELDING PLATE | SUS301 3/4H T=0.15mm | ---  | 1PCS |
| 2   | CONTACT         | C18400-H T=0.12mm    | N 50u" MIN. UNDER PLATED OVER ALL PLATING C/P OF THE SOLDER AREA OF CONTACT. | 25ET |
| 1   | HOUSING         | PA9T UL94V-0         | BLACK  | 1PCS |
| NO. | DESCRIPTION     | MATERIAL             | REMARKS  | QTY  |

**HON YUAN**  
HON YUAN PRECISION IND. CO.,LTD.  
SHENZHEN, CHINA, R.O.C.



|                          |        |   |         |  |                    |
|--------------------------|--------|---|---------|--|--------------------|
| DRAWN NO.:               |        | DRAWN BY:   |         | <div>HON YUAN</div> <div>HON YUAN PRECISION IND. CO.,LTD.</div> <div>SHENZHEN, CHINA, R.O.C.</div> |                    |
| SEE THE PART NUMBER CODE |        | K.DING  |         |  |                    |
| GENERAL TOLERANCES       |        | CHECKED BY:   |         | TITLE  |                    |
| S.LI                     |        |   |         |  |                    |
| X.XXXX                   | ± ---  | APPROVED BY:  |         | USB CF 16PIN (L=7.35)WITH POST   |                    |
| X.XXX                    | ± 0.10 | W.P.LU  |         |  |                    |
| X.XXX                    | ± 0.20 |   |         |  |                    |
| X.X                      | ± 0.30 |   |         |  |                    |
| ANGULAR                  | ± 3°   |  |         |  |                    |
| THIRD ANGLE PROJECTION   |        | DIMENSIONS  |         |  |                    |
| mm                       |        | SCALE   | DRAWING | SHEET NO.  | DWG. NO.           |
|                          |        | 1:1   | A4      | 1 OF 2   | TC044-16S1 B12R-02 |

| REV | ECN No. | DATE       | REMARK      |
|-----|---------|------------|-------------|
| A   | NEW     | 2019.10.21 | NEW RELEASE |
| B   | ---     | 2022.10.18 | ---         |



RECOMMENDED PCB LAYOUT(TOP VIEW)

THICKNESS 0.80MM;DEFAULT TOLERANCE:±0.05

SCALE:2:1

|                          |                        |                                  |                   |
|--------------------------|------------------------|----------------------------------|-------------------|
| PART NO.:                | DRAWN BY:              | HON YUAN                         |                   |
| SEE THE PART NUMBER CODE | K.DING                 | HON YUAN PRECISION IND. CO.,LTD. |                   |
| GENERAL TOLERANCES       | CHECKED BY:            | SHENZHEN, CHINA, R.O.C.          |                   |
| x.xxxx ± ---             | S.Li                   | TITLE                            |                   |
| x.xxx ± 0.10             | APPROVED BY:           | USB CF 16PIN (L=7.35)WITH POST   |                   |
| x.xx ± 0.20              | W.P.LU                 | DIMENSIONS                       |                   |
| x.x ± 0.30               | THIRD ANGLE PROJECTION | SCALE                            | DRAWING           |
| ANGULAR ± 3°             |                        | 1:1                              | A4                |
|                          |                        | SHEET NO.                        | 2 OF 2            |
|                          |                        | DMC NO.                          | T044-16SL B12K-02 |